

Sec. 23, T.3S. R.8 $\frac{1}{2}$ E., W. M.

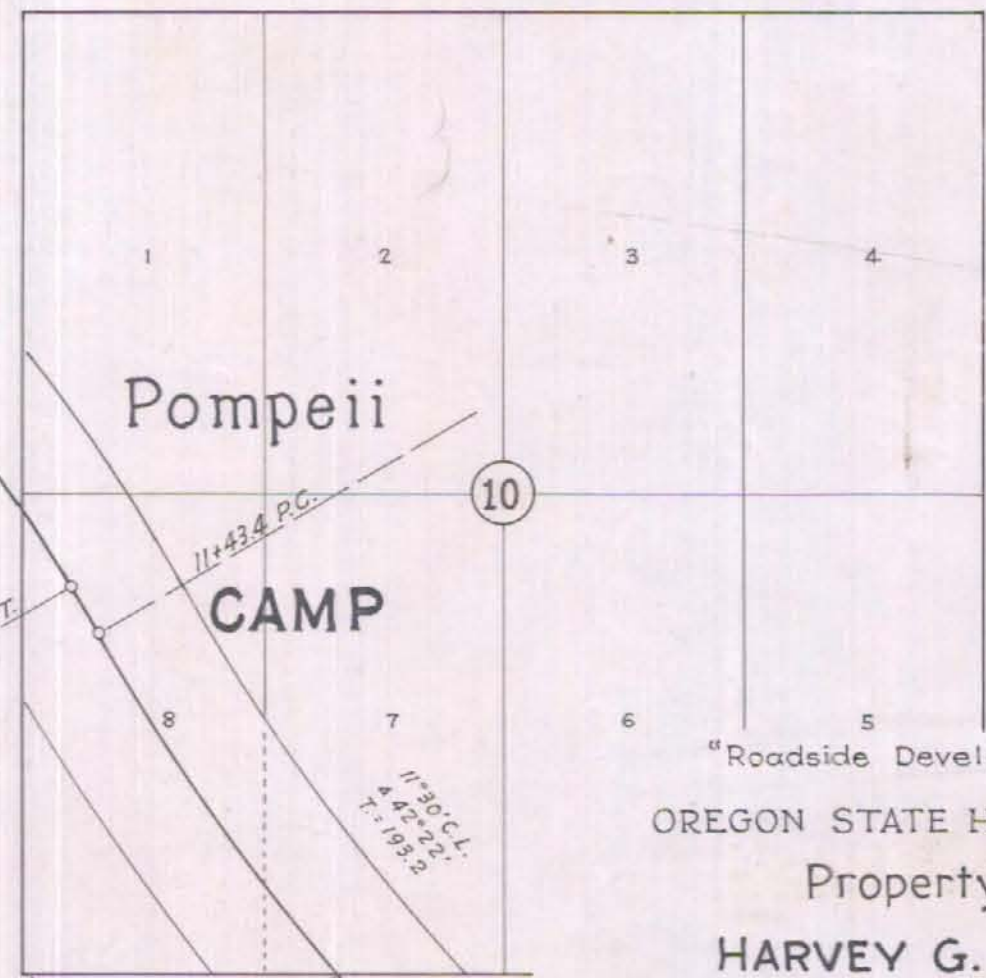
NW $\frac{1}{4}$ NW $\frac{1}{4}$

To Portland

MT HOOD LOOP HIGHWAY

SECOND STREET

Deed P-34
(from Harvey G Starkweather et ux)



STREET
CHURCH STREET



"Roadside Development Area"
OREGON STATE HIGHWAY DEPARTMENT
Property Donated by
HARVEY G. STARKWEATHER

for
BARLOW MONUMENT SITE

MT HOOD LOOP HIGHWAY

CLACKAMAS COUNTY

Scale 1 in. = 40 ft.

August 1926

See 5C-10-18

5C-10-18 (100')
5B-4-4 (400')

