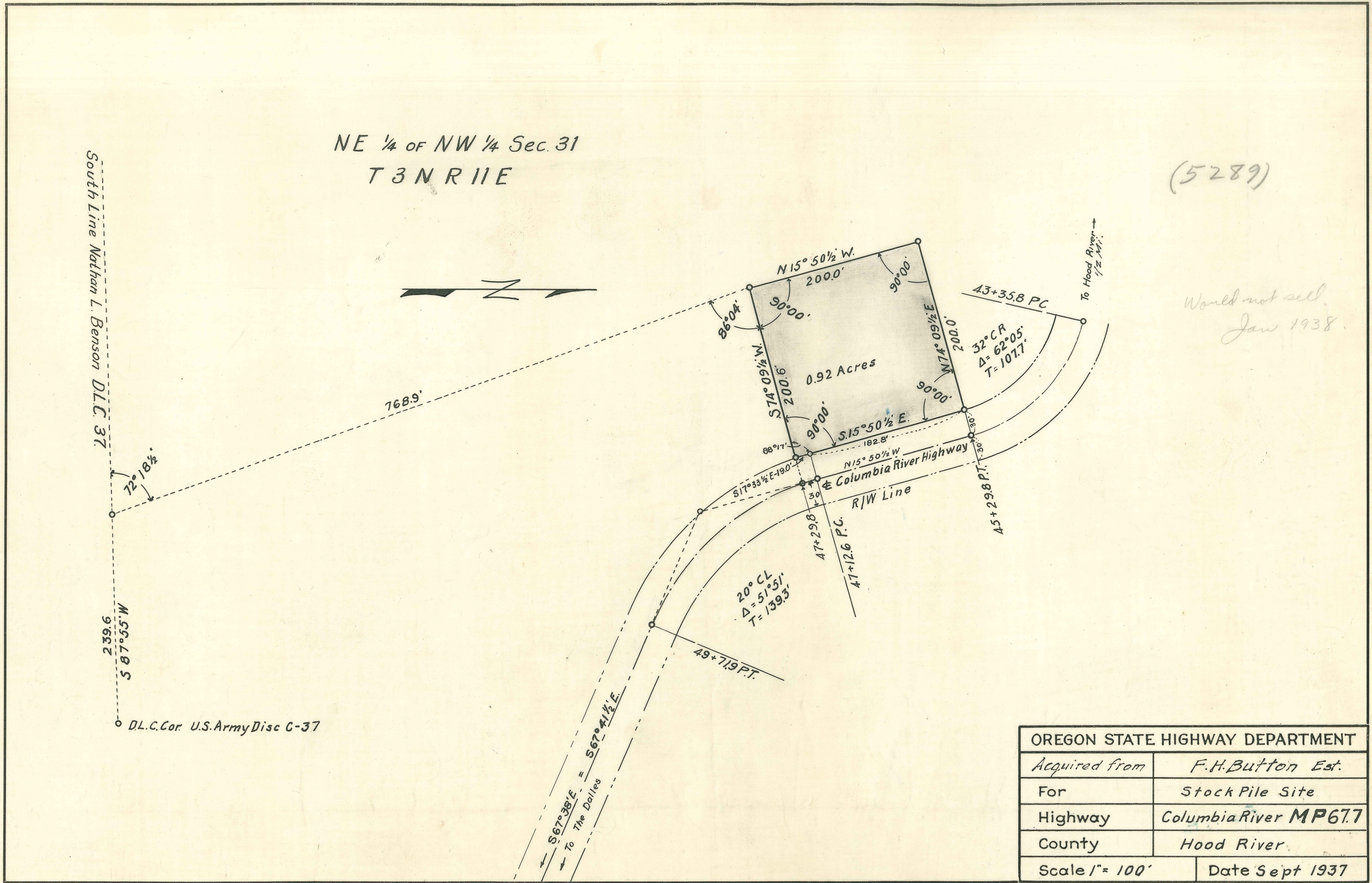


NE 1/4 of NW 1/4 Sec. 31
T3N R11E

(5289)

Would not sell.
Jan 1938.



OREGON STATE HIGHWAY DEPARTMENT	
Acquired from	F.H. Button Est.
For	Stock Pile Site
Highway	Columbia River MP 67.7
County	Hood River
Scale 1" = 100'	Date Sept 1937

3 B-15-8

M.P. 67.7

7